

KRYPTON

Your Components



Spare Parts Rehab



DEVELOPMENT
PRODUCTION
SALE



KRYPTON Europe s.r.o.

Services you can rely on.



Europe Office

KRYPTON Europe s.r.o.
Nádražní 48, 514 01 Jilemnice
CZECH REPUBLIC

Krypton Industries Limited
410, Vardaan Building
25A Camac Street, Kolkata – 700 016
West Bengal, INDIA



Mr. Vladimír Valenta

Europe Office

KRYPTON Europe s.r.o. was established in 2019 as a result of connection of 30 years of manufacturing experience of Krypton Industries Limited (India) and more than twenty years of experience in trade and sales of spare parts in the REHAB segment on the European market. Our goal is long-term cooperation and support of existing and future customers in Europe, both in the field of standard products and customized projects too. Our benefits include support and communication with customers directly in Europe, as well as daily communication and operative solution of customer requirements with the production plant in India.

A handwritten signature in black ink that reads "Vladimír Valenta".



KRYPTON Europe s.r.o.

Complete **wheels,**
castor wheels, polyurethane
tyres, pneumatic tyres,
foam filled tyres for electric
wheelchairs, aluminium castor
wheels, forks, rollators and
electric wheelchairs
accessories,
armpads, seat cushions,
crutches and other.

KRYPTON Europe s.r.o.

Nádražní 48
514 01 Jilemnice
Czech Republic
Phone: +420 737 262 162
Email: vladimir@kryptongroup.com



Content

Page

4-7 Aluminium Wheels

- 4" Aluminium Wheel with Polyurethane Tyre
- 5" Aluminium Wheel with Polyurethane Tyre

8-17 Wheels with Polyurethane Tyre

- 5" Wheels with Polyurethane Tyre
- 6" Wheels with Polyurethane Tyre
- 7" Wheels with Polyurethane Tyre
- 8" Wheels with Polyurethane Tyre
- 8" Wheel with TPR Tyre
- 10" Baby Strollers Wheel
- 12" Wheels with Polyurethane Tyre

18-19 Wheels with Rubber Tyre

- 5" Wheels with Solid Rubber Tyre

20-23 Rear Wheels Aluminium & Plastic

- 24" Aluminium Spoke Wheels
- 24" Plastic Spoke Wheels

24-36 Polyurethane Tyres

- WC
- KLB
- KL
- KB
- ECO-LN
- ECO-RX
- KDB
- PYD

37-48 Polyurethane Parts

- Arm Pads and Foam Parts
- Seat Cushion

49 Others

- Ice Peak



Profile Treads



SMOOTH

Profile Rim



AL

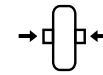
Legend



Wheel diameter
[mm]



Wheel width
[mm]



Hub length
[mm]



Axle diameter
[mm]



Profile Treads



Colours



Weight [g]



Load capacity [kg]

KRYPTON Europe s.r.o.

Aluminium Wheels



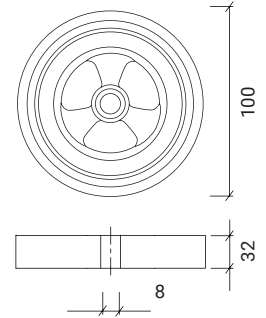
4"

Aluminium Wheels

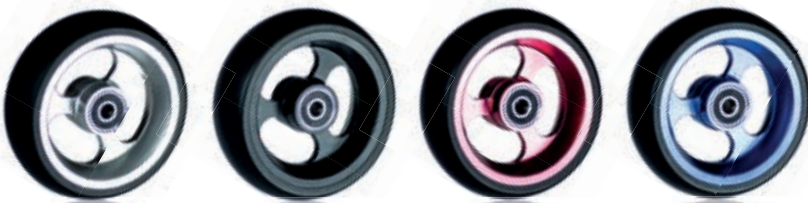


4" Aluminium Wheel with Polyurethane Tyre

DESCRIPTION:
Light aluminium wheel for wheelchairs.



Article code		[mm]									kg	Price/€
PUW200027	AL	100 × 32	100	32	26	8	Smooth	Silver	180 g	30 kg		
PUW200028	AL	100 × 32	100	32	26	8	Smooth	Black	180 g	30 kg		
PUW200029	AL	100 × 32	100	32	26	8	Smooth	Red	180 g	30 kg		
PUW200030	AL	100 × 32	100	32	26	8	Smooth	Blue	180 g	30 kg		



KRYPTON Europe s.r.o.
Nádražní 48
514 01 Jilemnice
Czech Republic
Phone: +420 737 262 162
Email: vladimir@kryptongroup.com

KRYPTON

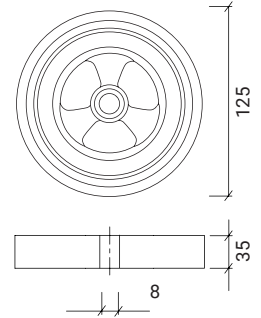
5"

Aluminium Wheels

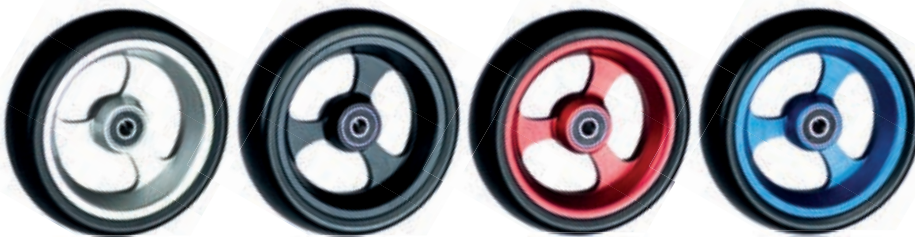


5" Aluminium Wheel with Polyurethane Tyre

DESCRIPTION:
Light aluminium wheel for wheelchairs.



Article code		[mm]								kg	Price/€
PUW200023	AL	125 × 35	125	35	26	8	Smooth	Silver	245 g	35 kg	
PUW200024	AL	125 × 35	125	35	26	8	Smooth	Black	245 g	35 kg	
PUW200025	AL	125 × 35	125	35	26	8	Smooth	Red	245 g	35 kg	
PUW200026	AL	125 × 35	125	35	26	8	Smooth	Blue	245 g	35 kg	



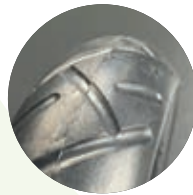
KRYPTON Europe s.r.o.
Nádražní 48
514 01 Jilemnice
Czech Republic
Phone: +420 737 262 162
Email: vladimir@kryptongroup.com



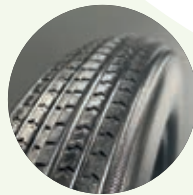
Profile Treads



SMOOTH



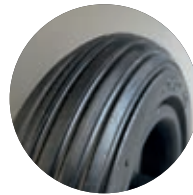
RACER



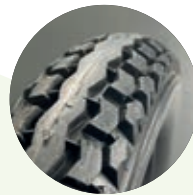
SWIFT



RC



RL



M28

Profile Rim



HOLLOW



STANDARD

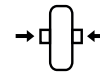
Legend



Wheel diameter
[mm]



Wheel width
[mm]



Hub length
[mm]



Axle diameter
[mm]



Profile Treads



Colours



Weight [g]



kg
Load capacity [kg]

KRYPTON Europe s.r.o.

Wheels with Polyurethane Tyre



KRYPTON

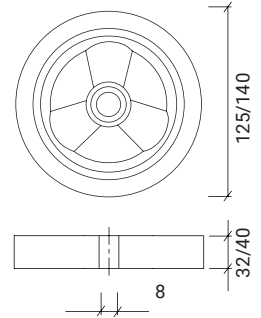
5"

Wheels with Polyurethane Tyre



5" Wheels with Polyurethane Tyre

DESCRIPTION:
Light plastic wheel for wheelchairs.



Article code	[mm]								kg	Price/€
PUW01609-38	125 × 32	125	32	38	8	RC	Grey	200 g	30 kg	
PUW01609B-38	125 × 32	125	32	38	8	RC	Black	200 g	30 kg	
PUW01609-45	125 × 32	125	32	45	8	RC	Grey	200 g	30 kg	
PUW01609B-45	125 × 32	125	32	45	8	RC	Black	200 g	30 kg	

Article code	[mm]								Load	Price/€
PUW30008-45	125 × 40	125	40	45	8	Smooth	Grey	270 g	35 kg	
PUW30009-45	140 × 40	140	40	45	8	Smooth	Grey	350 g	40 kg	



125 × 32 mm



125 × 32 mm



125 × 40 mm



140 × 40 mm



KRYPTON Europe s.r.o.
Nádražní 48
514 01 Jilemnice
Czech Republic
Phone: +420 737 262 162
Email: vladimir@kryptongroup.com

6"

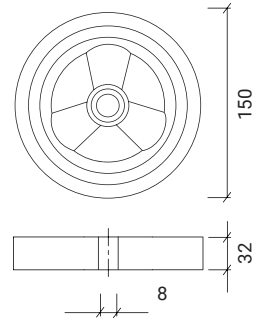
KRYPTON

Wheels with Polyurethane Tyre



6" Wheels with Polyurethane Tyre

DESCRIPTION:
Light plastic wheel for wheelchairs.



Article code	[mm]								kg	Price/€
PUW01605-36	150 × 32	150	32	36	8	RL	Grey	290 g	30 kg	
PUW01605B-36	150 × 32	150	32	36	8	RL	Black	290 g	30 kg	
PUW01605-38	150 × 32	150	32	38	8	RL	Grey	290 g	30 kg	
PUW01605B-38	150 × 32	150	32	38	8	RL	Black	290 g	30 kg	
PUW01605-45	150 × 32	150	32	45	8	RL	Grey	290 g	30 kg	
PUW01605B-45	150 × 32	150	32	45	8	RL	Black	290 g	30 kg	



150 × 32 mm
45 mm



150 × 32 mm
38 mm



KRYPTON Europe s.r.o.
Nádražní 48
514 01 Jilemnice
Czech Republic
Phone: +420 737 262 162
Email: vladimir@kryptongroup.com

7"

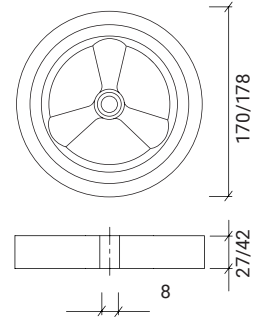
KRYPTON

Wheels with Polyurethane Tyre



7" Wheels with Polyurethane Tyre

DESCRIPTION:
Light plastic wheel for wheelchairs.



Article code	[mm]								kg	Price/€
PUW02210-60	175 × 25	178	27	60	8	RC	Grey	330 g	30 kg	
PUW02210B-60	175 × 25	178	27	60	8	RC	Black	330 g	30 kg	

Article code	[mm]								Load	Price/€
PUW01702-45	175 × 40	170	42	45	8	RL	Grey	430 g	45 kg	
PUW01702B-45	175 × 40	170	42	45	8	RL	Black	430 g	45 kg	
PUW01702-60	175 × 40	170	42	60	8	RL	Grey	430 g	45 kg	
PUW01702B-60	175 × 40	170	42	60	8	RL	Black	430 g	45 kg	



175 × 25 mm



175 × 25 mm



175 × 40 mm



175 × 40 mm



KRYPTON Europe s.r.o.
Nádražní 48
514 01 Jilemnice
Czech Republic
Phone: +420 737 262 162
Email: vladimir@kryptongroup.com

8"

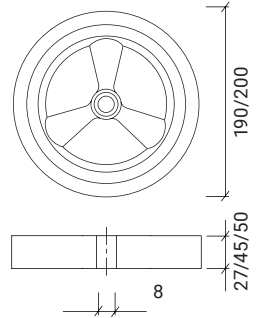
KRYPTON

Wheels with Polyurethane Tyre



8" Wheels with Polyurethane Tyre

DESCRIPTION:
Light plastic wheel for wheelchairs.



Article code	[mm]								kg	Price/€
PUW02105-45	200 × 30	200	27	45	8	RC	Grey	410 g	35 kg	
PUW02105B-45	200 × 30	200	27	45	8	RC	Black	410 g	35 kg	
PUW02105-60	200 × 30	200	27	60	8	RC	Grey	410 g	35 kg	
PUW02105B-60	200 × 30	200	27	60	8	RC	Black	410 g	35 kg	

Article code	[mm]								Load	Price/€
PUW01502-60-ECO	200 × 50	190	45	60	8	RL	Grey	480 g	50 kg	
PUW01502B-60-ECO	200 × 50	190	45	60	8	RL	Black	480 g	50 kg	
PUW01502-60-REAL	200 × 50	200	50	60	8	RL	Grey	560 g	50 kg	
PUW01502B-60-REAL	200 × 50	200	50	60	8	RL	Black	560 g	50 kg	



200 × 30 mm



200 × 30 mm



200 × 50 mm
REAL



200 × 50 mm
ECO



KRYPTON Europe s.r.o.
Nádražní 48
514 01 Jilemnice
Czech Republic
Phone: +420 737 262 162
Email: vladimir@kryptongroup.com



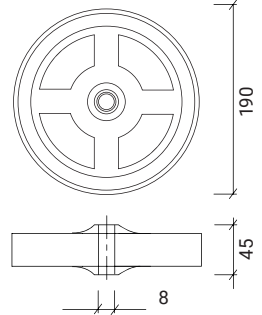
8" Roll

Rollator Wheel TPR Tyre



8" Wheel with TPR Tyre

DESCRIPTION:
Light plastic wheel for rollators.



Article code

[mm]



kg
↓ ↓

Price/€

TPRW0001

190 × 45

190

45

60

8

RC

Dark grey

390 g

30 kg



KRYPTON Europe s.r.o.

Nádražní 48

514 01 Jilemnice

Czech Republic

Phone: +420 737 262 162

Email: vladimir@kryptongroup.com

KRYPTON

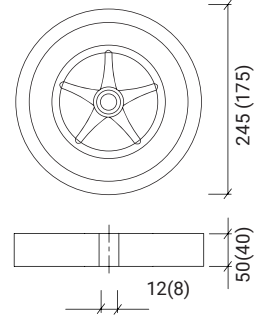
10"(7")

Baby Strollers Wheel



10"(7") Baby Strollers Wheel

DESCRIPTION:
Plastic wheel for baby strollers
with polyurethane tyre.



Article code	[mm]								kg ↓	Price/€
PUW01312-46	245 × 50	245	50	46,5	12	RACER	Grey	810 g	50 kg	
PUW001312B-46	245 × 50	245	50	46,5	12	RACER	Black	810 g	50 kg	

Article code	[mm]								kg ↓	Price/€
PUW30012-60	175 × 40	175	40	60	8	RACER	Grey	475 g	45 kg	
PUW30012B-60	175 × 40	175	40	60	8	RACER	Black	475 g	45 kg	



245 × 50 mm



245 × 50 mm



KRYPTON Europe s.r.o.
Nádražní 48
514 01 Jilemnice
Czech Republic
Phone: +420 737 262 162
Email: vladimir@kryptongroup.com

KRYPTON

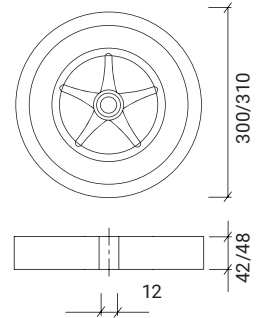
12"

Wheels with Polyurethane Tyre



12" Wheels with Polyurethane Tyre

DESCRIPTION:
Light plastic wheel for wheelchairs.



Article code [mm] kg Price/€

rim hollow PA6 GF15%

PUW01208-38-H	310 x 42	12 ^{1/2} x 2 ^{1/4}	42	38	12	RC	Grey	1 250 g	50 kg	
PUW01208B-38-H	310 x 42	12 ^{1/2} x 2 ^{1/4}	42	38	12	RC	Black	1 250 g	50 kg	

Article code [mm] kg Price/€

rim hollow PA6 GF15%

PUW02007-38-H	310 x 42	12 ^{1/2} x 2 ^{1/4}	42	38	12	EWC	Grey	1 660 g	50 kg	
PUW02007B-38-H	310 x 42	12 ^{1/2} x 2 ^{1/4}	42	38	12	EWC	Black	1 660 g	50 kg	

Article code [mm] kg Price/€

rim standard PA6 GF15%

PUW02006-52	310 x 42	12 ^{1/2} x 2 ^{1/4}	42	52	12	RC	Grey	1 100 g	50 kg	
PUW02006B-52	310 x 42	12 ^{1/2} x 2 ^{1/4}	42	52	12	RC	Black	1 100 g	50 kg	

Article code [mm] kg Price/€

rim standard PA6 GF15%

PUW01616-52	300 x 48	12 ^{1/2} x 2 ^{1/4}	48	52	12	SWIFT	Grey	1 200 g	50 kg	
PUW01616B-52	300 x 48	12 ^{1/2} x 2 ^{1/4}	48	52	12	SWIFT	Black	1 200 g	50 kg	

12"

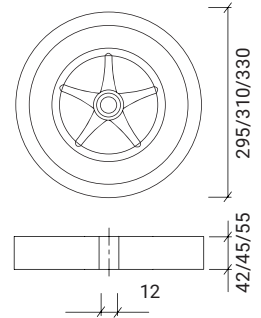
KRYPTON

Wheels with Polyurethane Tyre



12" Wheels with Polyurethane Tyre

DESCRIPTION:
Light plastic wheel for wheelchairs.



Article code

[mm]



kg

Price/€

rim standard PA6 GF15%



PUW30011-52

330 x 55

12^{1/2} x 2^{1/4}

55

52

12

M28

Grey

1 565 g

50 kg

PUW3001B-52

330 x 55

12^{1/2} x 2^{1/4}

55

52

12

M28

Black

1 565 g

50 kg

Article code

[mm]



kg

Price/€

rim PPCP



PUW3006-48

310 x 42

12^{1/2} x 2^{1/4}

42

48

12

RC

Grey

1 020 g

45 kg

PUW3006B-48

310 x 42

12^{1/2} x 2^{1/4}

42

48

12

RC

Black

1 020 g

45 kg

Article code

[mm]



kg

Price/€

rim PPCP



PUW3007-48

295 x 45

12^{1/2} x 2^{1/4}

45

48

12

FLAT

Grey

885 g

45 kg

PUW3007B-48

295 x 45

12^{1/2} x 2^{1/4}

45

48

12

FLAT

Black

885 g

45 kg

PA6 GF15% is a 15% glass fibre reinforced, heat stabilised polyamide 6 with medium stiffness and strength.

PPCP or polypropylene copolymer is a thermoplastic polymer material. This form is a bit softer but has a high impact strength.



KRYPTON Europe s.r.o.

Nádražní 48

514 01 Jilemnice

Czech Republic

Phone: +420 737 262 162

Email: vladimir@kryptongroup.com

KRYPTON Europe s.r.o.

Wheels with Rubber Tyre



5"

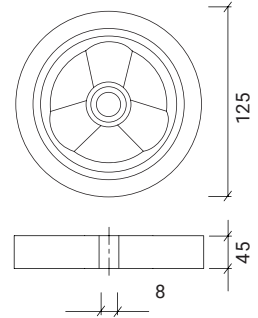
KRYPTON

Wheels with Solid Rubber Tyre



5" Wheels with Solid Rubber Tyre

DESCRIPTION:
Plastic wheel with solid rubber tyre for wheelchairs.



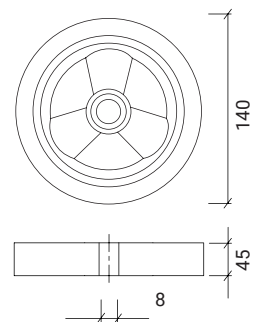
Article code	[mm]								kg ↓↓	Price/€
RUBW1001-45	125 × 40	125	40	45	8	Smooth	Grey	395 g	35 kg	
RUBW1001B-45	125 × 40	125	40	45	8	Smooth	Black	395 g	35 kg	

6"



6" Wheels with Solid Rubber Tyre

DESCRIPTION:
Plastic wheel with solid rubber tyre for wheelchairs.



Article code	[mm]								kg ↓↓	Price/€
RUBW1002-45	140 × 40	140	40	45	8	Smooth	Grey	535 g	40 kg	
RUBW1002B-45	140 × 40	140	40	45	8	Smooth	Black	535 g	40 kg	



KRYPTON Europe s.r.o.
Nádražní 48
514 01 Jilemnice
Czech Republic
Phone: +420 737 262 162
Email: vladimir@kryptongroup.com

Profile Treads



ECO LN



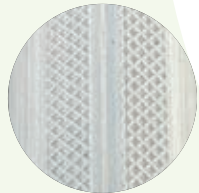
ECO LN (Black)



ECO RX



ECO RX (Black)



WC



WC (Black)



KB



KB (Black)



KL



KL (Black)



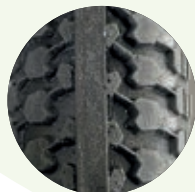
KLB (Dark Grey)



KLB (Yellow)



PYD (Black)



KDB



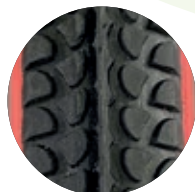
HD



INSERT



DK



DK (Red-Black)

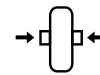
Legend



Wheel diameter
[mm]



Wheel width
[mm]



Hub length
[mm]



Axle diameter
[mm]



Profile Treads



Colours



Weight [g]



Load capacity [kg]

KRYPTON Europe s.r.o.

Rear Wheels Aluminium & Plastic





24"

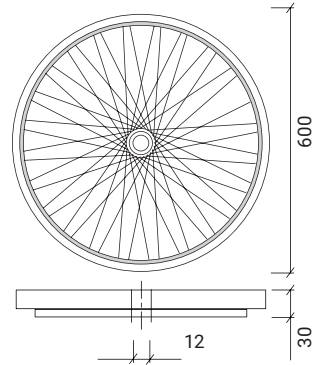
Aluminium Spoke Wheels



24" Aluminium Spoke Wheels

DESCRIPTION:

- Complete wheel for wheelchair
- aluminium rim - silver anodized
- aluminium pushrim - silver anodized - polyurethane tyre
- 36 steel spokes
- steel hub - black powder coating
- bearing 6001 2RS - 12 mm



Article code	[inch]								kg ↓ ↓	Price/€
PUW01102	24 × 1 3/8	600	30	53	12	ECO-LN	Grey	1 760 g	80 kg	
PUW01102B	24 × 1 3/8	600	30	53	12	ECO-LN	Black	1 760 g	80 kg	

Article code	[inch]								kg ↓ ↓	Price/€
PUW01101	24 × 1	600	25	53	12	WC	Grey	1 700 g	80 kg	
PUW01101B	24 × 1	600	25	53	12	WC	Black	1 700 g	80 kg	



KRYPTON Europe s.r.o.
 Nádražní 48
 514 01 Jilemnice
 Czech Republic
 Phone: +420 737 262 162
 Email: vladimir@kryptongroup.com



24"

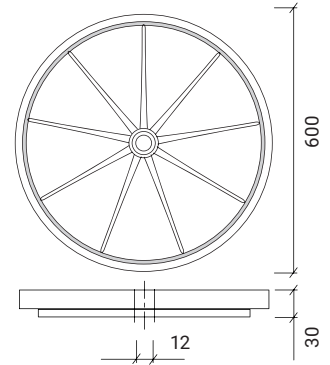
Plastic Spoke Wheels



24" Plastic Spoke Wheels

DESCRIPTION:

- Complete plastic wheel for wheelchair
- plastic rim (9 spokes)
- aluminium pushrim - silver anodized - polyurethane tyre
- bearing 6201 2RS - 12 mm



Article code [inch] kg Price/€

With aluminium pushrim

PUW01001BB	24 × 1 3/8	600	30	53	12	ECO-LN	Black	2 195 g	80 kg	
PUW01001GG	24 × 1 3/8	600	30	53	12	ECO-LN	Grey	2 195 g	80 kg	

With plastic pushrim

PUW01002BB	24 × 1 3/8	600	30	53	12	ECO-LN	Black	2 195 g	80 kg	
PUW01002GG	24 × 1 3/8	600	30	53	12	ECO-LN	Grey	2 195 g	80 kg	

NO pushrim

PUW02101BB	24 × 1 3/8	600	30	53	12	ECO-LN	Black	1 950 g	80 kg	
PUW02101GG	24 × 1 3/8	600	30	53	12	ECO-LN	Grey	1 950 g	80 kg	



KRYPTON Europe s.r.o.
 Nádražní 48
 514 01 Jilemnice
 Czech Republic
 Phone: +420 737 262 162
 Email: vladimir@kryptongroup.com

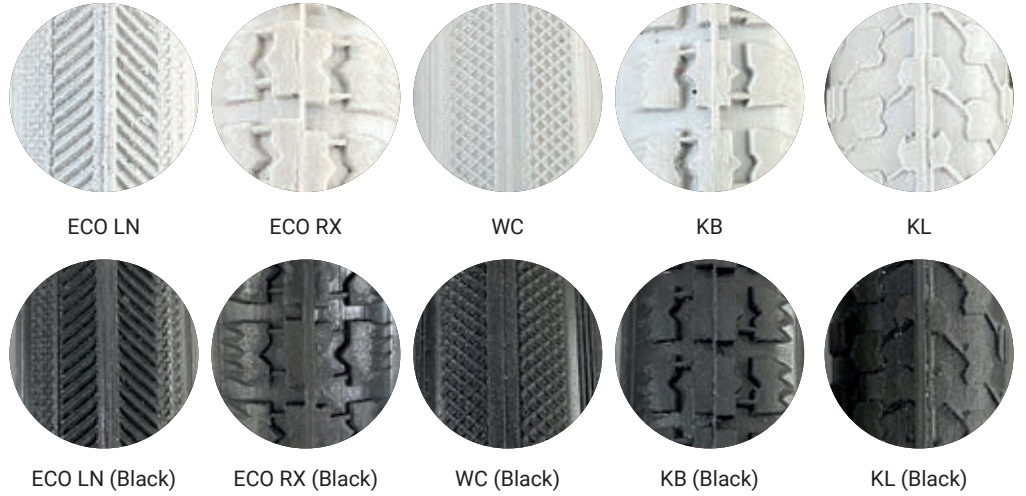


KRYPTON Europe s.r.o.

POLYURETHANE TYRES



Profile Treads



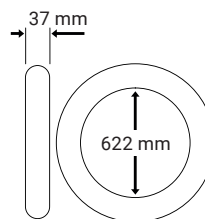
type	ECO LN	ECO RX	WC	KB	KL
26"			●		
24"	●	●	●	●	●
22"			●	●	
20"			●		
16"					
12"					

Size Markings

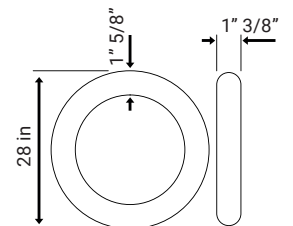
Current dimensions markings on tires.



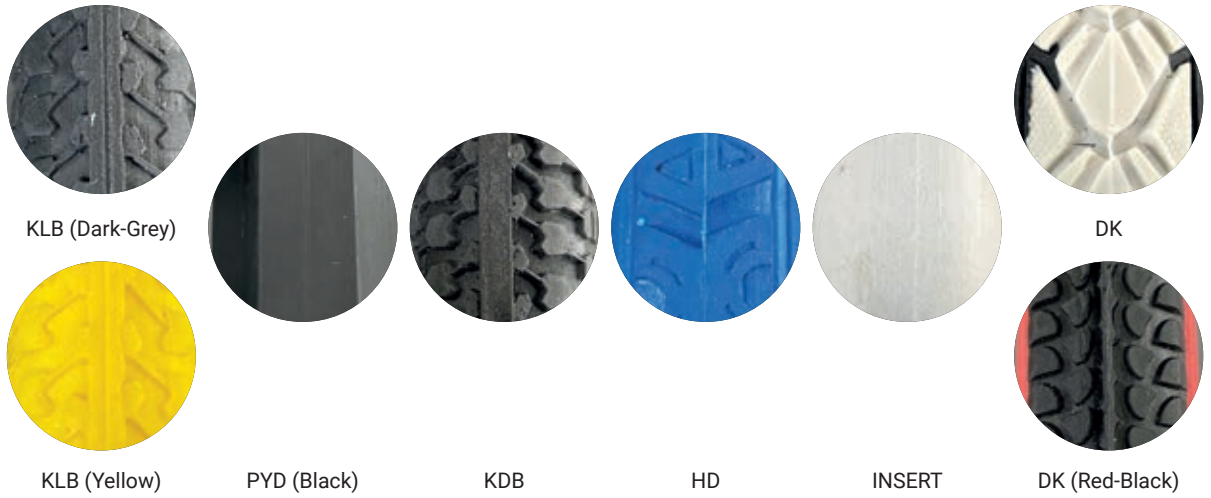
KRYPTON Europe s.r.o.
 Nádražní 48
 514 01 Jilemnice
 Czech Republic
 Phone: +420 737 262 162
 Email: vladimir@kryptongroup.com



ETRTO (ISO)
 37 - 622
 In mm approximate
 tire width - rim diameter



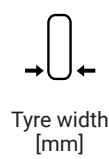
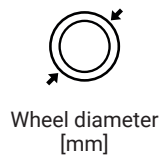
Inch markings
 28 x 1 5/8 x 1 3/8
 In inch approximate
 tire outer diameter x tire height
 (optional) x tire width



type	KLB	PYD	KDB	HD	INSERT	DK
26"		●				
24"	●	●				
22"		●		●		
20"			●		●	●
16"			●			
12"						

Hardness

- 1 = 5-6 Bar
- 2 = 6-7 Bar
- 3 = 7-8 Bar
- 4 = 8-9 Bar



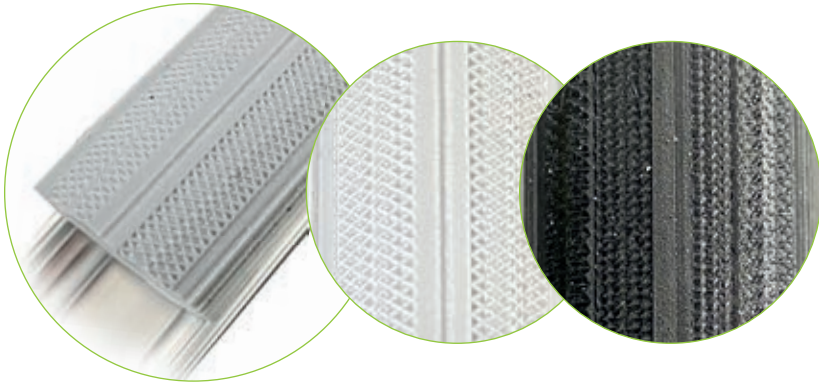
Base

- A = 16 - 18 mm
- B = 18 - 20 mm
- C = 19 - 21 mm
- D = 21 - 22 mm



ETRTO
ISO 5775

WC



26 × 1"

Article code	[inch]							ETRTO		
PUT00046B-3C	26" × 1"									
				19-21		WC		Black		8-9 Bar

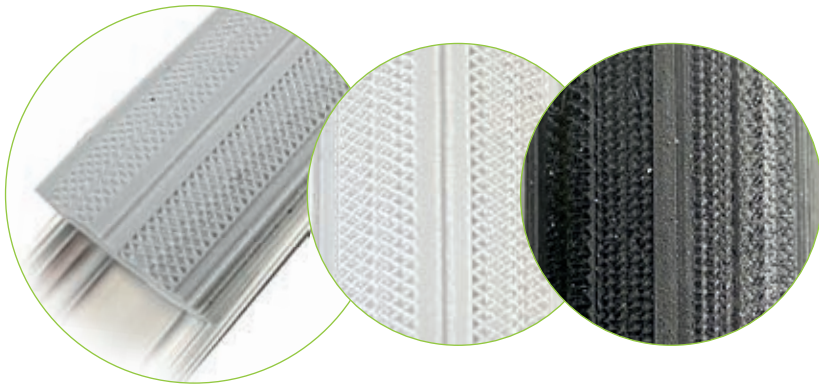
25 × 1"

Article code	[inch]							ETRTO		
PUT00039B-4C	25" × 1"									
				19-21		WC		Black		8-9 Bar



KRYPTON Europe s.r.o.
 Nádražní 48
 514 01 Jilemnice
 Czech Republic
 Phone: +420 737 262 162
 Email: vladimir@kryptongroup.com

WC



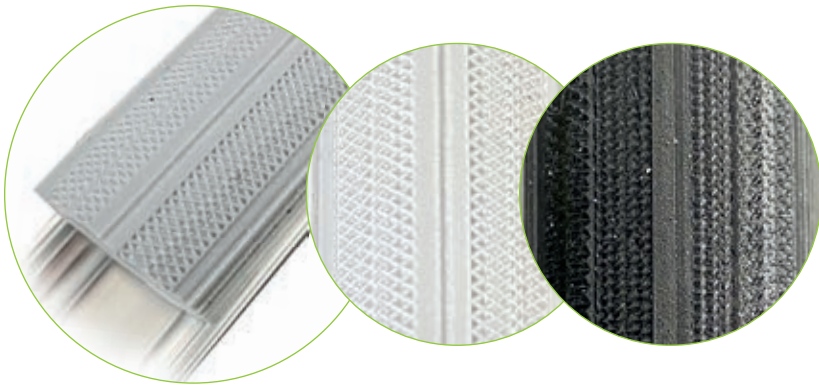
24 × 1 3/8"

Article code	[inch]							ETRTO		
PUT00004-1C	24" × 1 3/8"	24	32	19-21	540	WC	37-540	Grey	5-6 Bar	
PUT00004B-1C	24" × 1 3/8"	24	23	19-21	540	WC	37-540	Black	5-6 Bar	
PUT00004-2C	24" × 1 3/8"	24	32	19-21	540	WC	37-540	Grey	6-7 Bar	
PUT00004B-2C	24" × 1 3/8"	24	23	19-21	540	WC	37-540	Black	6-7 Bar	
PUT00004-3C	24" × 1 3/8"	24	32	19-21	540	WC	37-540	Grey	7-8 Bar	
PUT00004B-3C	24" × 1 3/8"	24	23	19-21	540	WC	37-540	Black	7-8 Bar	
PUT00004-4C	24" × 1 3/8"	24	32	19-21	540	WC	37-540	Grey	8-9 Bar	
PUT00004B-4C	24" × 1 3/8"	24	23	19-21	540	WC	37-540	Black	8-9 Bar	

24 × 1"

Article code	[inch]							ETRTO		
PUT00006-1C	24" × 1"	20	25	19-21	540	WC	25-540	Grey	5-6 Bar	
PUT00006DG-1C	24" × 1"	20	25	19-21	540	WC	37-540	Dark Grey	5-6 Bar	
PUT00006-2C	24" × 1"	20	25	19-21	540	WC	37-540	Grey	6-7 Bar	
PUT00006-3C	24" × 1"	20	25	19-21	540	WC	37-540	Grey	7-8 Bar	
PUT00006-4C	24" × 1"	20	25	19-21	540	WC	37-540	Grey	8-9 Bar	
PUT00006B-4C	24" × 1"	20	25	19-21	540	WC	37-540	Black	8-9 Bar	
PUT00006-2D	24" × 1"	20	25	19-21	540	WC	37-540	Grey	6-7 Bar	
PUT00006B-2D	24" × 1"	20	25	19-21	540	WC	37-540	Blac	6-7 Bar	

WC



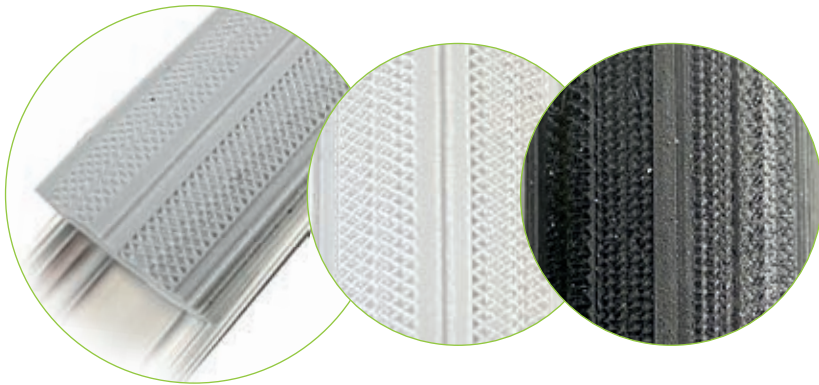
22 × 1 3/8"

Article code	[inch]							ETRTO		
PUT00003-1C	22" × 1 3/8"	24	32	19-21	489	WC	37-489	Grey	5-6 Bar	
PUT00003B-1C	22" × 1 3/8"	24	32	19-21	489	WC	37-489	Black	5-6 Bar	
PUT00003-2C	22" × 1 3/8"	24	32	19-21	489	WC	37-540	Grey	6-7 Bar	
PUT00003B-2C	22" × 1 3/8"	24	32	19-21	489	WC	37-540	Black	6-7 Bar	
PUT00003-3C	22" × 1 3/8"	24	32	19-21	489	WC	37-540	Grey	7-8 Bar	
PUT00003B-3C	22" × 1 3/8"	24	32	19-21	489	WC	37-540	Black	7-8 Bar	
PUT00003-4C	22" × 1 3/8"	24	32	19-21	489	WC	37-540	Grey	8-9 Bar	
PUT00003B-4C	24" × 1 3/8"	24	32	19-21	489	WC	37-540	Black	8-9 Bar	

22 × 1"

Article code	[inch]							ETRTO		
PUT00042-4A	22" × 1"	19	23	16-18	451	WC	25-501	Grey	8-9 Bar	
PUT00003B-1C	22" × 1"	19	23	16-18	451	WC	25-501	Black	8-9 Bar	
PUT00008-1C	22" × 1"	20	25	19-21	489	WC	25-489	Grey	5-6 Bar	
PUT00008B-1C	22" × 1"	20	25	19-21	489	WC	25-489	Black	5-6 Bar	
PUT00008-4C	22" × 1"	20	25	19-21	489	WC	25-489	Grey	8-9 Bar	
PUT00008B-4C	22" × 1"	20	25	19-21	489	WC	25-489	Black	8-9 Bar	

WC



20 × 1 3/8"

Article code	[inch]							ETRTO		
PUT00002-1C	20" × 1 3/8"	24	31	19-21	451	WC	37-451	Grey	5-6 Bar	
PUT00002B-1C	20" × 1 3/8"	24	31	19-21	451	WC	37-451	Black	5-6 Bar	
PUT00002-2C	20" × 1 3/8"	24	31	19-21	451	WC	37-451	Grey	6-7 Bar	
PUT00002B-2C	20" × 1 3/8"	24	31	19-21	451	WC	37-451	Black	6-7 Bar	
PUT00002-3C	20" × 1 3/8"	24	31	19-21	451	WC	37-451	Grey	7-8 Bar	
PUT00002B-3C	20" × 1 3/8"	24	31	19-21	451	WC	37-451	Black	7-8 Bar	
PUT00002-4C	20" × 1 3/8"	24	31	19-21	451	WC	37-451	Grey	8-9 Bar	
PUT00002B-4C	20" × 1 3/8"	24	31	19-21	451	WC	37-451	Black	8-9 Bar	

20 × 1"

Article code	[inch]							ETRTO		
PUT00040B-4A	20" × 1"	19	23	16-18	451	WC	25-451	Black	8-9 Bar	
PUT00040-4A	20" × 1"	19	23	16-18	451	WC	25-451	Grey	8-9 Bar	

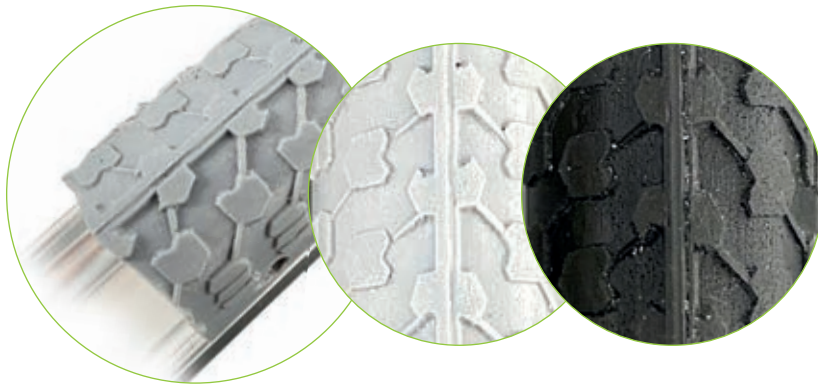
KLB



24 × 1 3/8"

Article code	[inch]							ETRTO		
PUT00005-2A	24" × 1 3/8"	24	31	18-20	540	KLB	37-540	Grey	6-7 Bar	
PUT00005-2C	24" × 1 3/8"	24	31	19-21	540	KLB	37-540	Grey	5-6 Bar	
PUT00005-1C	24" × 1 3/8"	24	31	19-21	540	KLB	37-540	Grey	5-6 Bar	
PUT00005DG-1C	24" × 1 3/8"	24	31	19-21	540	KLB	37-540	Dark Grey	6-7 Bar	
PUT00005DG-2C	24" × 1 3/8"	24	31	19-21	540	KLB	37-540	Dark Grey	6-7 Bar	
PUT00005-3C	24" × 1 3/8"	24	31	19-21	540	KLB	37-540	Grey	7-8 Bar	
PUT00005DG-1D	24" × 1 3/8"	24	31	21-22	540	KLB	37-540	Dark Grey	5-6 Bar	
PUT00005DG-2D	24" × 1 3/8"	24	31	21-22	540	KLB	37-540	Dark Grey	6-7 Bar	

KL



24 × 1

Article code	[inch]							ETRTO		
PUT00007DG-2A	24" × 1"		21	25	16-18	540	KL	25-540	Dark Grey	6-7 Bar
PUT00010-2B	24" × 1"		21	25	18-20	540	KL	37-540	Grey	6-7 Bar
PUT00007-2C	24" × 1"		21	25	19-21	540	KL	37-540	Grey	6-7 Bar
PUT00007DG-2C	24" × 1"		21	25	19-21	540	KL	37-540	Dark Grey	6-7 Bar
PUT00007B-2C	24" × 1"		21	25	19-21	540	KL	37-540	Black	6-7 Bar
PUT00007DG-3C	24" × 1"		21	25	19-21	540	KL	37-540	Dark Grey	7-8 Bar
PUT00007-2D	24" × 1"		21	25	21-22	540	KL	37-540	Grey	6-7 Bar

KB



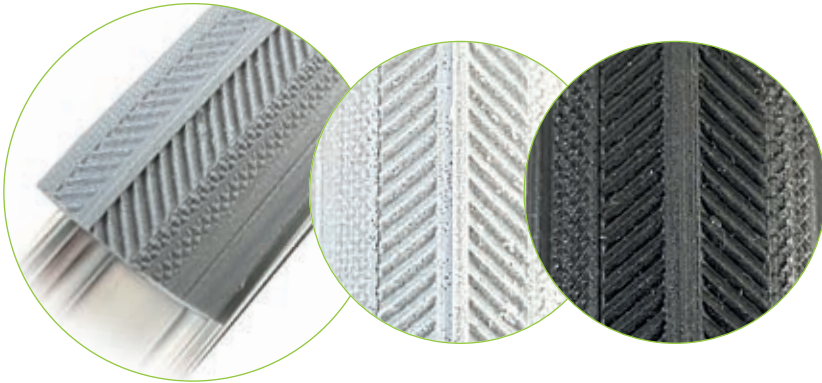
24 × 1 3/8"

Article code	[inch]							ETRTO		
PUT00034-2C	24" × 1 3/8"	26	32	19-21	540	KB	37-540	Grey	6-7 Bar	
PUT00034B-2C	24" × 1 3/8"	26	32	19-21	540	KB	37-540	Black	6-7 Bar	
PUT00034B-4C	24" × 1 3/8"	26	32	19-21	540	KB	37-540	Black	8-9 Bar	

22 × 1 3/8"

Article code	[inch]							ETRTO		
PUT00033-1C	22" × 1 3/8"	26	33	19-21	489	KB	37-489	Grey	5-6 Bar	
PUT00033B-2C	22" × 1 3/8"	26	33	19-21	489	KB	37-489	Black	6-7 Bar	
PUT00033-2C	22" × 1 3/8"	26	33	19-21	489	KB	37-489	Grey	6-7 Bar	
PUT00035-2C	22" × 1 3/8"	26	33	19-21	501	KB	37-501	Grey	6-7 Bar	

ECO-LN



24 × 1 3/8"

Article code	[inch]							ETRTO		
PUT00106-2C	24" × 1 3/8"	610	30	23	19-21	540	ECO-LN	37-540	Grey	6-7 Bar
PUT00106B-2C	24" × 1 3/8"	610	30	23	19-21	540	ECO-LN	37-540	Black	6-7 Bar

ECO-RX



24 × 1 3/8"

Article code	[inch]							ETRTO		
PUT00104-2C	24" × 1 3/8"	610	29	23	19-21	540	ECO-RX	37-540	Grey	6-7 Bar
PUT00104B-2C	24" × 1 3/8"	610	29	23	19-21	540	ECO-RX	37-540	Black	6-7 Bar

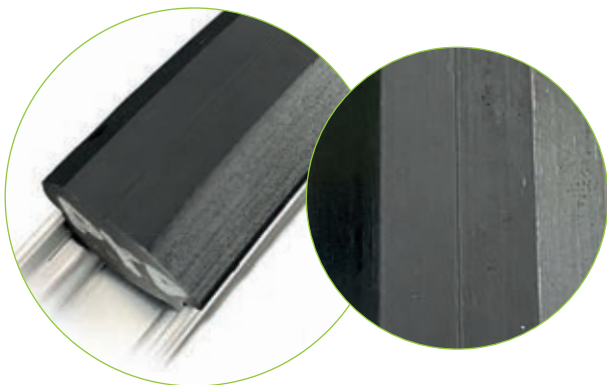
KDB



20 × 1,75"
16 × 1,75"

Article code	[inch]							ETRTO		
PUT01002-2	20" × 1,75"	610	30	23	23-26	540	KDB	37-540	Black	6-7 Bar
PUT55006	16" × 1,75"			27	19-21	3	KDB	47-305	Grey	6-7 Bar

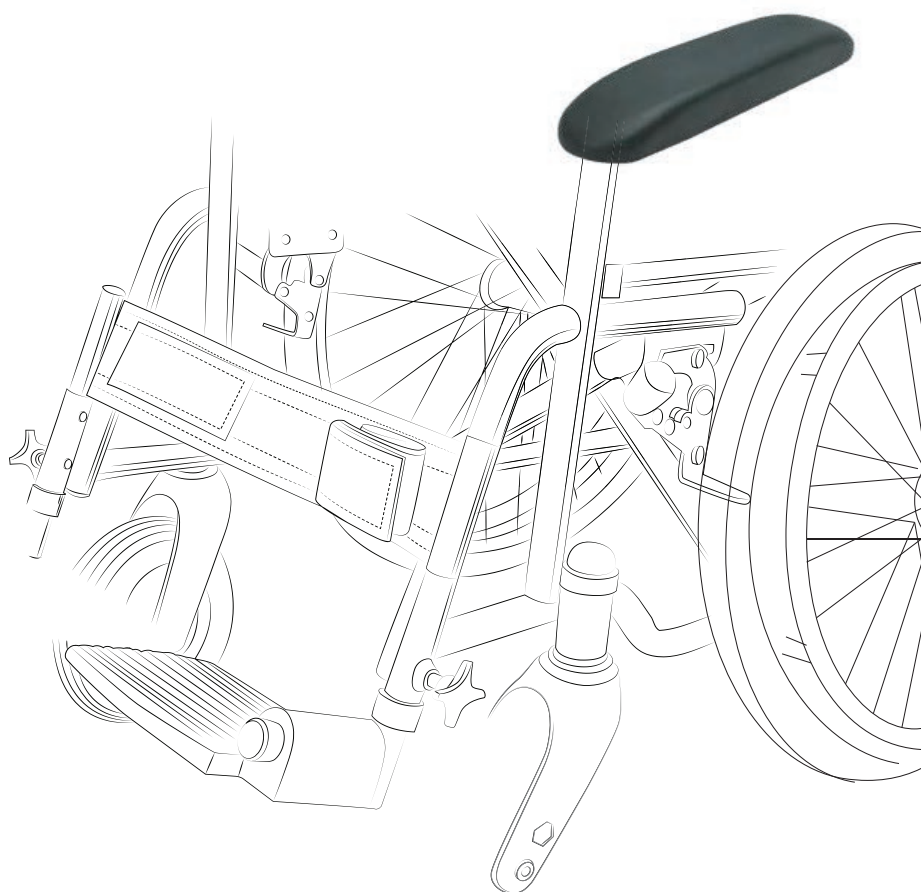
PYD



22 × 1"
24 × 1"

Article code	[inch]							ETRTO		
PUT00024	22" × 1"	517	14	27	19	489	PYD	25-489	Black	8-9 Bar
PUT00023	24" × 1"	568	14	28	18	540	PYD	25-540	Black	8-9 Bar

Polyurethane Parts

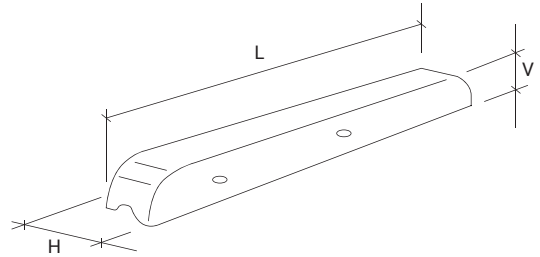


Arm Rest PU

315 × 42 × 30 mm (Polyurethane)



DESCRIPTION:
Arm Rest (Big)

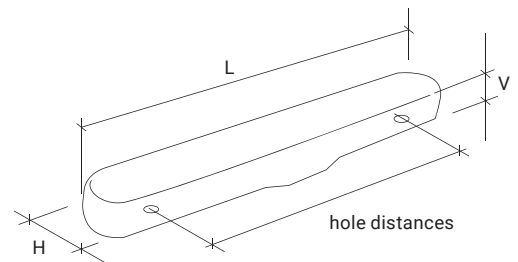


Article code	L [mm]	H [mm]	V [mm]		Price/€
ARP3154230	315	42	30	Black	

330 × 50 × 25 mm (Polyurethane)



DESCRIPTION:
Arm Rest (Big II)
• hole distance 260 mm

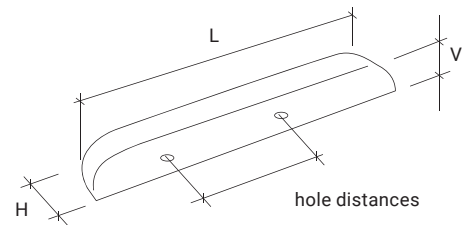


Article code	L [mm]	H [mm]	V [mm]		Price/€
ARP3305025	330	50	25	Black	

240 × 42 × 30 mm (Polyurethane)



DESCRIPTION:
Arm Rest (Small)
• hole distance 105 mm



Article code	L [mm]	H [mm]	V [mm]		Price/€
ARP2404230	240	42	30	Black	

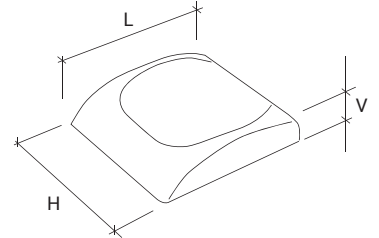


Arm Rest PU

165 × 110 × 40 mm (Polyurethane)



DESCRIPTION:
Arm Rest

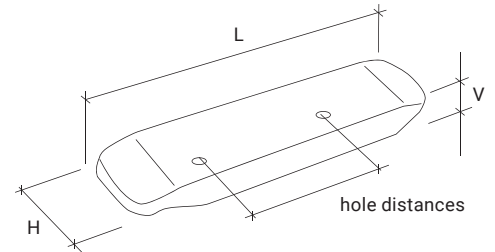


Article code	L [mm]	H [mm]	V [mm]		Price/€
ARP16511040	165	110	40	Black	

380 × 58 × 32 mm (Polyurethane)



DESCRIPTION:
Arm Rest
• hole distance 175 mm

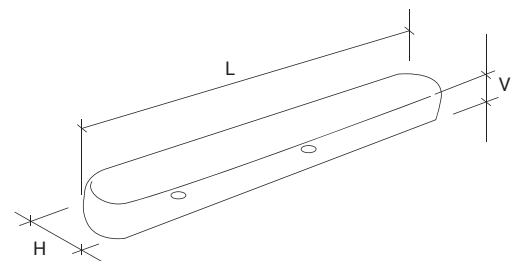


Article code	L [mm]	H [mm]	V [mm]		Price/€
ARP1426723	380	58	32	Black	

280 × 59 × 28 mm (Polyurethane)



DESCRIPTION:
Arm Rest



Article code	L [mm]	H [mm]	V [mm]		Price/€
ARP7001	280	59	28	Black	

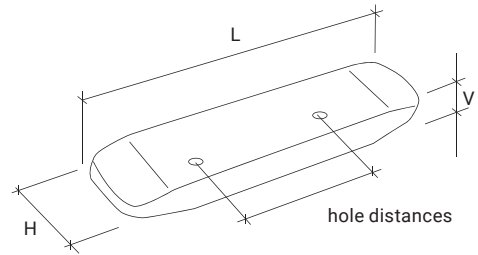


Arm Rest PU

280 × 58 × 32 mm (Polyurethane)



DESCRIPTION:
Arm Rest
• hole distance 175 mm

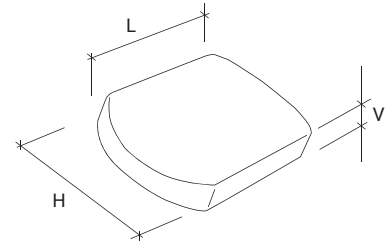


Article code	L [mm]	H [mm]	V [mm]		Price/€
1434676	280	58	32	Black	

235 × 145 × 35 mm (Polyurethane)



DESCRIPTION:
Arm Rest

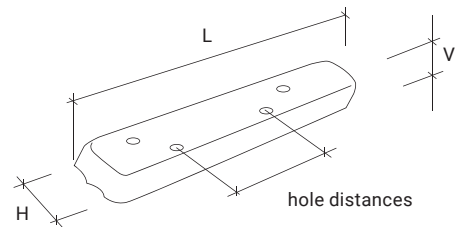


Article code	L [mm]	H [mm]	V [mm]		Price/€
ARP23514535	235	145	35	Black	

370 × 50 × 30 mm (Polyurethane)



DESCRIPTION:
Arm Rest
• hole distance 240 mm
• hole distance 228 mm



Article code	L [mm]	H [mm]	V [mm]		Price/€
P3705030	370	50	30	Black	

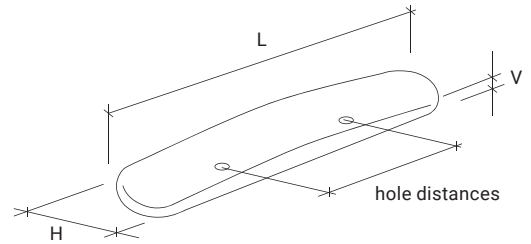


Arm Rest PU

330 × 60 × 24 mm (Polyurethane)



DESCRIPTION:
Arm Rest
• hole distance 178 mm

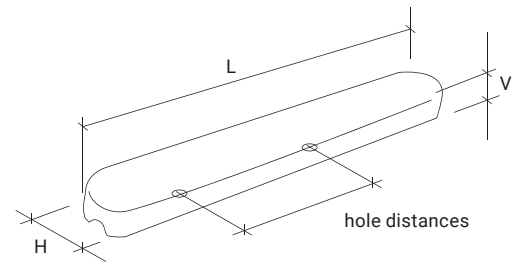


Article code	L [mm]	H [mm]	V [mm]		Price/€
ARP3306024	330	60	24	Black	

365 × 48 × 25 mm (Polyurethane)



DESCRIPTION:
Arm Rest
• hole distance 265 mm

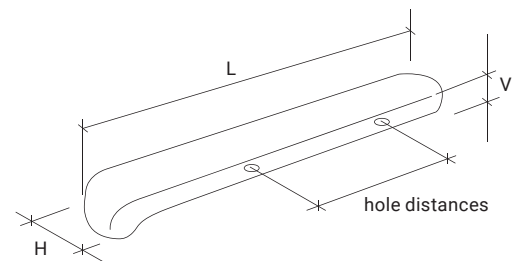


Article code	L [mm]	H [mm]	V [mm]		Price/€
ARP3654825	365	48	25	Black	

345 × 52 × 20 mm (Polyurethane)



DESCRIPTION:
Arm Rest
• hole distance 137,5 mm



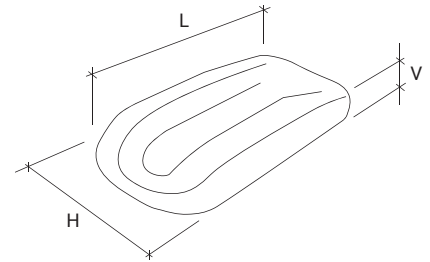
Article code	L [mm]	H [mm]	V [mm]		Price/€
ARP3455220	345	52	20	Black	





Arm Rest PU

350 × 122 × 35 mm (Polyurethane)



DESCRIPTION:
Arm Rest

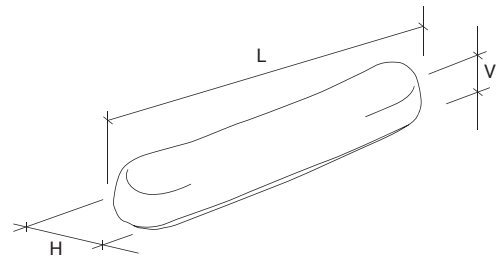






Article code	 L [mm]	 H [mm]	 V [mm]		Price/€
ARP35012235	350	122	35	Black	

210 × 36 × 36 mm (Polyurethane)



DESCRIPTION:
Arm Rest

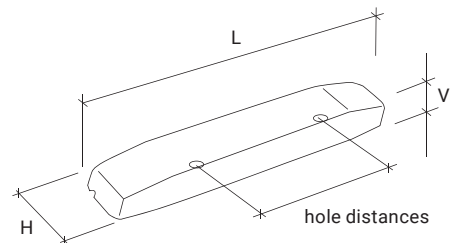






Article code	 L [mm]	 H [mm]	 V [mm]		Price/€
ARP2103636	210	36	36	Black	

300 × 50 × 35 mm (Polyurethane)



DESCRIPTION:
Arm Rest
• hole distance 200 mm



Article code	 L [mm]	 H [mm]	 V [mm]		Price/€
ARP3005035	300	50	35	Black	

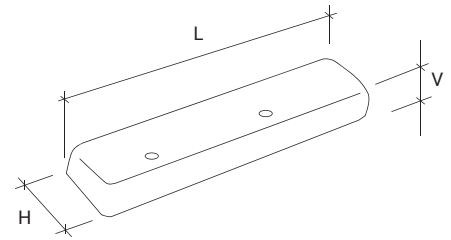


Arm Rest PU

280 × 60 × 30 mm (Polyurethane)



DESCRIPTION:
Arm Rest

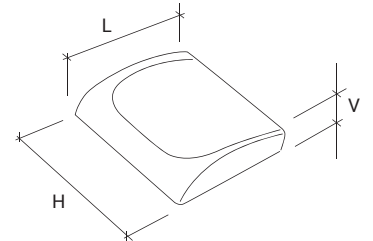


Article code	L [mm]	H [mm]	V [mm]		Price/€
P2806030B	280	60	30	Black	

165 × 145 × 40 mm (Polyurethane)



DESCRIPTION:
Arm Rest

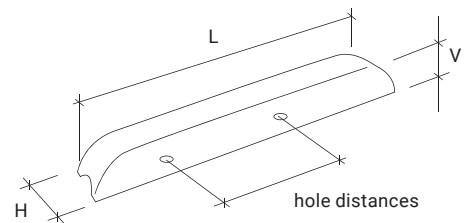


Article code	L [mm]	H [mm]	V [mm]		Price/€
ARP16514040B	165	145	40	Black	

240 × 42 × 30 mm (Polyurethane)



DESCRIPTION:
Arm Rest
• hole distance 105 mm



Article code	L [mm]	H [mm]	V [mm]		Price/€
ARP2404230	240	42	30	Black	

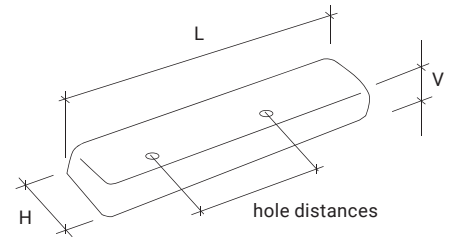


Arm Rest PU

156 × 42 × 20 mm (Polyurethane)



DESCRIPTION:
Arm Rest
• hole distance 106 mm

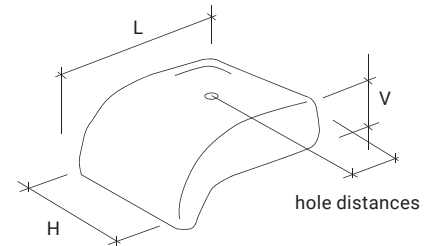


Article code	L [mm]	H [mm]	V [mm]		Price/€
ARP1564220	156	42	20	Black	

72 × 84 × 20 mm (Polyurethane)



DESCRIPTION:
Knee Pad
• hole distance 35 mm

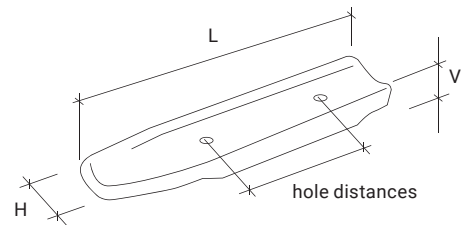


Article code	L [mm]	H [mm]	V [mm]		Price/€
ARP728420	72	84	20	Black	

391 × 80 × 49 mm (Polyurethane)



DESCRIPTION:
Arm Rest (EZI)
• hole distance 178 mm



Article code	L [mm]	H [mm]	V [mm]		Price/€
ARP3918049	391	80	49	Black	

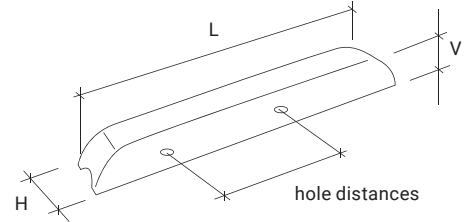


Arm Rest PU

220 × 42 × 30 mm (Polyurethane)



DESCRIPTION:
Arm Rest
• hole distance 150 mm

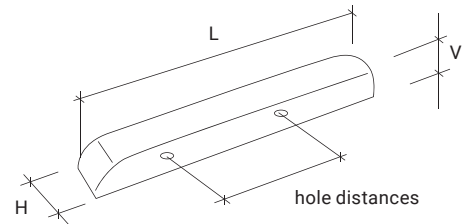


Article code	L [mm]	H [mm]	V [mm]		Price/€
ARP2204230	220	42	30	Black	

200 × 42 × 20 mm (Polyurethane)



DESCRIPTION:
Arm Rest
• hole distance 140 mm

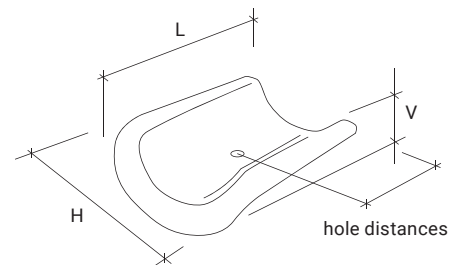


Article code	L [mm]	H [mm]	V [mm]		Price/€
ARP2004220	200	42	20	Black	

290 × 180 × 32 mm (Polyurethane)



DESCRIPTION:
Calf Pad
• hole distance 150 mm



Article code	L [mm]	H [mm]	V [mm]		Price/€
ARP29018032	290	180	32	Black	

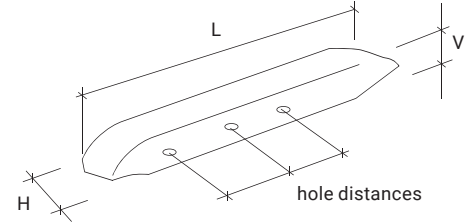
Arm Rest PU



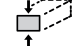

280 × 58 × 32 R+L (3+3) mm (Polyurethane)



DESCRIPTION:

- with riveting nut M5 (3 + 3)
– on the both sides
- for ROUND tube
- short
- hole distance 0 mm + 61 mm + 150 mm



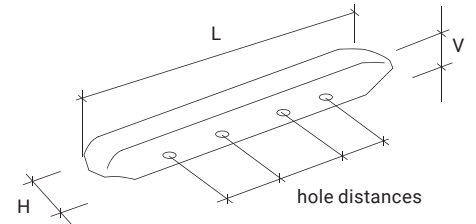
Article code	 L [mm]	 H [mm]	 V [mm]		Price/€
ARP26721-RT-6	280	58	32	Black	



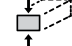

380 × 58 × 32 R+L (4+4) mm (Polyurethane)



DESCRIPTION:

- with riveting nut M5 (4 + 4)
– on both sides
- for ROUND tube
- short
- hole distance 0 mm + 90 mm + 150 mm + 260 mm



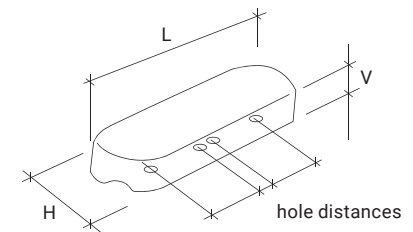
Article code	 L [mm]	 H [mm]	 V [mm]		Price/€
ARP26723-RT-8	380	58	32	Black	



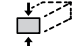

175 × 50 × 26 mm (Polyurethane)



DESCRIPTION:

- hole distance 82 mm
- hole distance 17 mm
- M5



Article code	 L [mm]	 H [mm]	 V [mm]		Price/€
ARP1755026	175	50	26	Black	

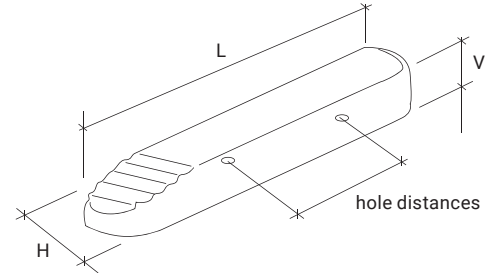


Arm Rest PU

303 × 59 × 37 (Polyurethane)



DESCRIPTION:
Arm Rest
• hole distance 168 mm

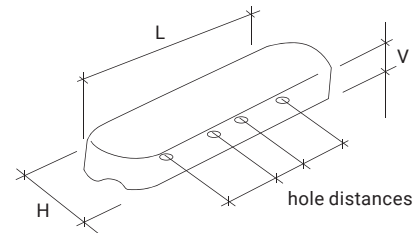


Article code	L [mm]	H [mm]	V [mm]	Price/€
ARP3035937	303	59	37	Black

265 × 55 × 26 (Polyurethane)



DESCRIPTION:
• hole distance 128 mm
• hole distance 82 mm
• M5

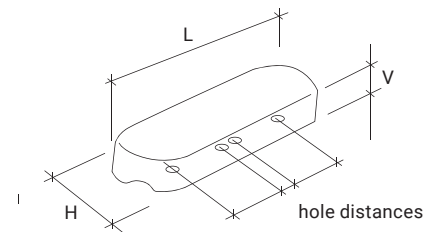


Article code	L [mm]	H [mm]	V [mm]	Price/€
ARP2655026	265	55	26	Black

235 × 50 × 26 mm (Polyurethane)



DESCRIPTION:
• hole distance 124,75 mm
• hole distance 82 mm
• M5



Article code	L [mm]	H [mm]	V [mm]	Price/€
ARP2355026	235	50	26	Black

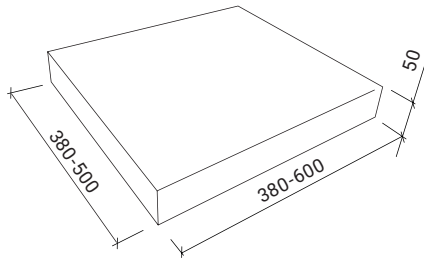
Seat cushion (PU foam)



Seat cushion (PU foam)

Removable polyester cover with zipper. Výměnný polyesterový potah se zipem.

- washable / omyvatelný
- disinfectable / dezinfikovatelný
- anti-slip protection / protiskluzová ochrana
- different sizes / různé rozměry



Article code mm mm mm

WP383850	380	380	50
WP384050	380	400	50
WP384250	380	420	50
WP384350	380	430	50
WP404050	400	400	50
WP404250	400	420	50
WP434050	430	400	50
WP434250	430	420	50
WP434350	430	430	50
WP434550	430	450	50
WP435050	430	500	50
WP454050	450	400	50
WP454250	450	420	50
WP454550	450	450	50
WP454850	450	480	50
WP484250	480	420	50
WP484350	480	430	50
WP504350	500	430	50
WP514350	510	435	50
WP534350	530	430	50
WP554350	550	430	50
WP604350	600	435	50



KRYPTON Europe s.r.o.

Nádražní 48
514 01 Jilemnice
Czech Republic
Phone: +420 737 262 162
Email: vladimir@kryptongroup.com



KRYPTON

ICE PEAK

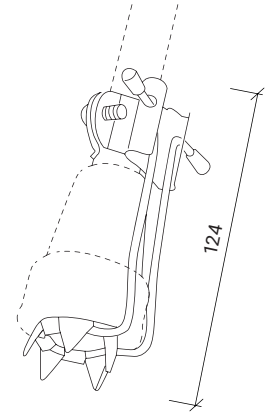


ICE PEAK – násadec na hůl (protiskluzový)

DESCRIPTION/POPIS:

For maximum confidence and safety when walking on snow and ice. / Pro maximální jistotu a bezpečnost při chůzi na sněhu a ledu.

- metal folding structure / kovová odklopná konstrukce
- universal use / univerzální použití
- non-slip spikes / protiskluzové hroty



Article code

[mm]



kg
↓↑

Price/€

ICE PEAK 1 Peak



124 × 37 × 63 mm

16 ÷ 19,5 mm

30 ÷ 45 mm

stainless steel

75 g

max. 100 kg

ICE PEAK Crown



124 × 37 × 63 mm

SS 304



KRYPTON Europe s.r.o.

Nádražní 48
514 01 Jilemnice
Czech Republic
Phone: +420 737 262 162
Email: vladimir@kryptongroup.com



Spare Parts Rehab



////// KRYPTON
Your Components

KRYPTON Europe s.r.o.

Nádražní 48

514 01 Jilemnice

Czech Republic

Phone: +420 737 262 162

Email: vladimir@kryptongroup.com



Request your quote:

www.kryptoneurope.com